



Dunbeath & District Centre
Community Health & Wellbeing

Trustee Recruitment Pack
(Board of Directors)

2024

Registered Scottish Charity: SC019367
Company Ltd by Guarantee: SC137444



Who We Are

Dunbeath & District Centre has been run as a Charitable Organisation since 1992 and is the vibrant Health & Wellbeing Centre for the local communities in the South East of Caithness. The Charity Board of Trustees is made up of volunteer members. Each one brings various skills and knowledge to the table with a common passion to make the Organisation a success. Our responsibility is to direct the charity and support Dunbeath & District Centre's management team in the delivery of our vision and budget. All trustees have limited time available and we use that time effectively by working well as a team and playing to our strengths.

For more information about the work we do please visit:
www.dunbeathanddistrictcentre.org



How We Work

We are passionate about Health & Wellbeing, so we put our service users at the heart of every decision.

We focus on empowering our service users to identify and achieve what they want, not what others tell them they need - “a person centred approach”.

Behind this simple and powerful ethos lies a commitment to building social initiatives through flexible and innovative services and practices.

Our model embraces going the extra mile in order to find efficient and effective solutions for each and every user. We pride ourselves on being: Approachable / Respectful / Honest / Inclusive



The Role

With our strategic and operational scope, the board recognises it needs to enhance and evolve its strategy that ensures a sustainable future delivering the best services to the communities we serve. We are highly committed to not only meeting legal and statutory obligations, but to optimising the growth of an organisation that holds people at its heart.

We are now seeking new dynamic Voluntary Trustee Board Members to join the team. The time commitment involved can be tailored to suit you - Trustees meet once a month to discuss the progress of the business and the forthcoming challenges and opportunities.

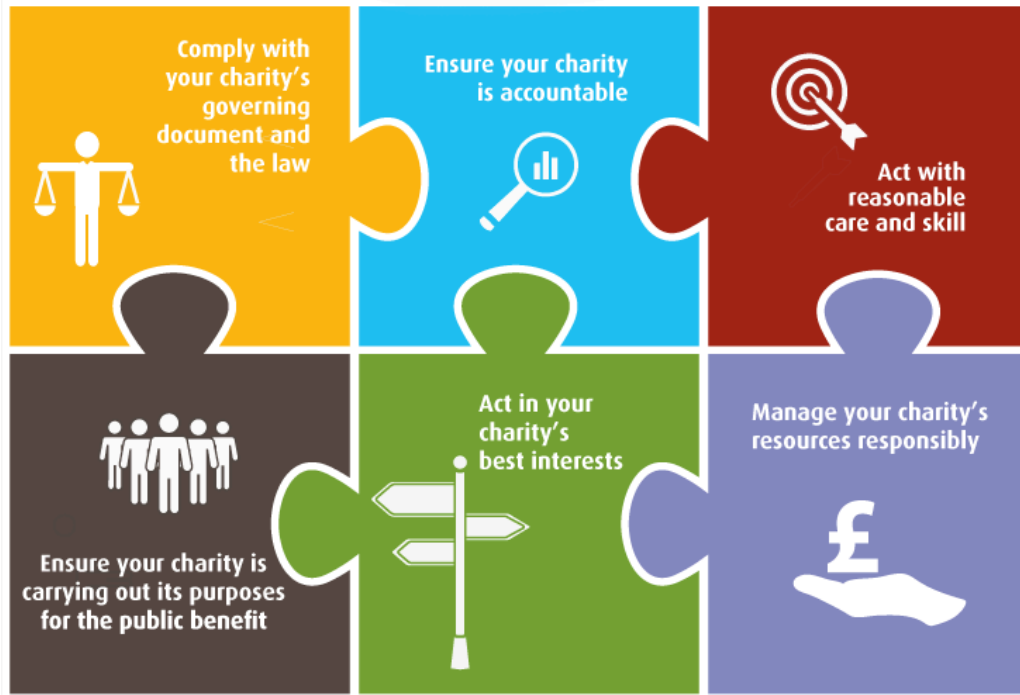




Attributes

- Committed to our established person centred, values-based work
- A willingness to devote the necessary time and effort
- Clear PVG check
- Strategic vision
- Good, independent judgement
- An ability to think creatively
- A willingness to speak your mind
- An understanding and acceptance of the legal duties and responsibilities of trusteeship
- An ability to work effectively as a member of a team - Selflessness, integrity, objectivity, accountability, openness, honesty and leadership
- A willingness to be available to provide advice to and answer enquiries from staff

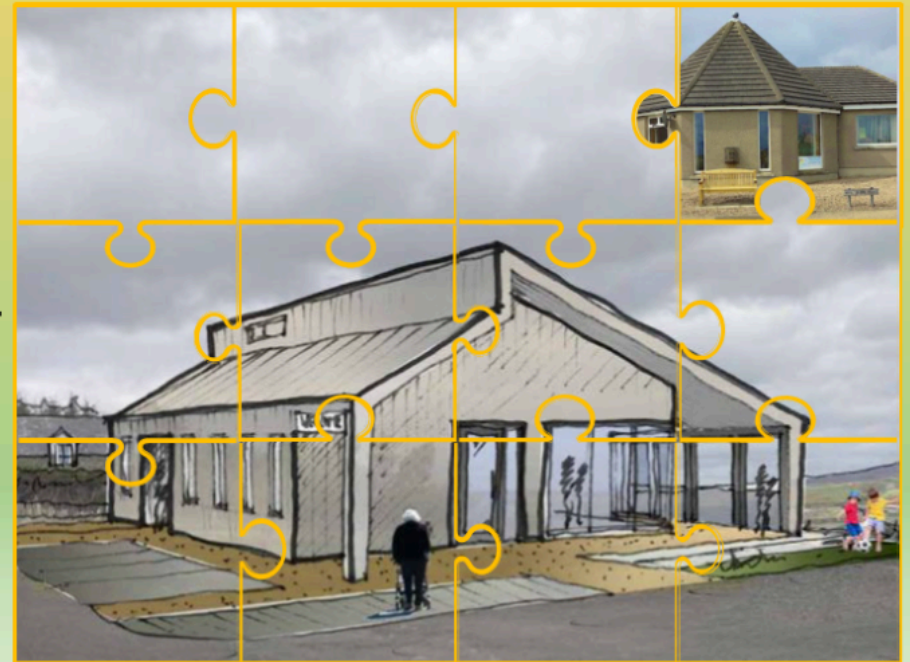
Responsibilities



Jigsaw Project

Dunbeath & District Centre

Community Health & Wellbeing



Artists Impression

Artists Impression

The Process

We realise that Voluntary Trustee Roles tend to be the first/early experience of being on a Board, we are therefore keen to make this process as friendly and welcoming as possible. Location of residency does not have to be in the immediate area. This is an excellent opportunity to use your skills and experience for the benefit of local communities and be part of a team who are passionate about making Dunbeath & District Centre a success.

